



# SILVER SHELLS

BEACH RESORT & SPA

15000 Emerald Coast Parkway

Destin, Florida 32541

1.850.650.9998

[www.silvershells.com](http://www.silvershells.com)



# SILVER SHELLS

BEACH RESORT & SPA

---

RESIDENCE



## CHECK OUT

Check out time is 10:00AM. Please take out all trash and load and run the dishwasher if dishes have been used. Return keys and pool towels to Guest Services.

## QUIET HOURS

Quiet hours are defined as 10:00PM to 8:00AM. Please be considerate of your neighbors and refrain from loud noises and music during these hours. In order to make sure everyone's experience here at Silver Shells is a pleasant one, please keep audio and video equipment volume at a reasonable level at all times. On occasion, resort entertainment may extend past 10:00PM.

## BEACH SERVICE

Guests receive complimentary beach service with each night of their stay. This service includes two chairs and one umbrella. Additional setups may be purchased from a beach attendant.

## AMENITIES

You have access to the fitness center, tennis courts, basketball court, playground and pools during your stay with us. Equipment such as basketballs and tennis rackets may be checked out at Guest Services for no additional charge. A room key or other identification will be required, so please be sure to bring it with you.

|                          |   |
|--------------------------|---|
| POOL                     | 7:00AM – 10:00PM  |
| FITNESS CENTER           | 7:00AM – 7:00PM   |
| THE SPA AT SILVER SHELLS | 9:00AM – 5:00PM<br><i>(Mon-Sat)</i>                                     |
| BEACH SERVICE            | 9:00AM – 5:00PM   |
| RUTH'S CHRIS STEAK HOUSE | 5:00PM – 10:00PM<br><i>(Mon-Sat)</i><br>5:00PM – 9:00PM<br><i>(Sun)</i> |
| SANDBAR*                 | 11:00AM – 6:00PM  |
| TRADER VIC'S             | 11:00AM – 10:00PM   |

*\*Seasonal: Memorial Day-Labor Day*



**SILVER SHELLS**  
BEACH RESORT & SPA

**LEGEND**

-  Playground
-  Beach Service

Gulf of Mexico



Beach Access



Sandbar

Beach Access

Public Beach Access

Henderson Beach State Park

St. Thomas

Whirlpool  
Kid's Pool  
Pool

St. Maarten

St. Croix

St. Barth

St. Lucia

Tennis Courts  
Cardio Room

St. Kitts (Future)

Basketball Court

Club House  
Indoor/Outdoor Pool

Guard Gate

Highway 98

Detail View of Club House

Guest Services  
Abec Realty  
Ruth's Chris Steak House  
Fitness Room  
Spa  
Men's Lockers/Sauna  
Women's Lockers/Sauna  
Indoor/Outdoor Pool  
Silver Shells Club House

*Thanks for choosing Silver Shells Beach Resort & Spa.*  
This packet contains some of the most helpful information you'll need during your stay. Please consult the in-room directory for additional details. Welcome. . . we are glad you chose to stay with us!

---

|                          |                |
|--------------------------|----------------|
| Guest Services           | 850.650.9998   |
| Courtesy Patrol          | 850.337.5870   |
| Beach Service*           | 850.337.5885   |
| The Spa at Silver Shells | 850.337.5107   |
| Ruth's Chris Steak House | 850.337.5108   |
| The Sandbar              | 850.337.5185   |
| Trader Vic's @ The Palms | 850.351.0900   |
| Real Estate Sales        | 850.650.9999   |
| Reservations             | 877.44.RESORTS |
| Housekeeping             | 850.337.5136   |
| Maintenance              | 850.351.0546   |

---

*\*Seasonal: Memorial Day-Labor Day*

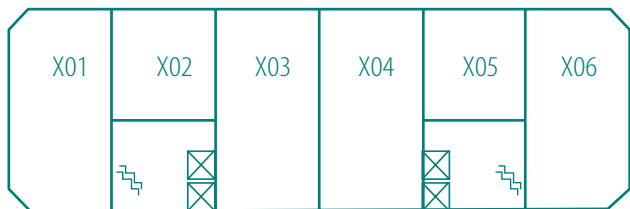


# ST. CROIX

## AT SILVER SHELLS BEACH RESORT

### ELEVATOR SERVICE

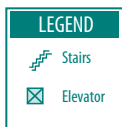
St. Croix is equipped with two sets of elevators. Key fobs are provided to allow access to St. Croix's lobby and garage.



ELEVATOR: EAST / WEST

FLOOR: \_\_\_\_\_

RESIDENCE: \_\_\_\_\_



01, 02, 03, PH1, PH2, PH3 use the EAST elevator.

04, 05, 06, PH4, PH5, PH6 use the WEST elevator.

Trash chutes are located in the hallway.

FIRE PULL ALARMS AND FIRE EXTINGUISHERS ARE LOCATED ON REAR TERRACE NEAR EMERGENCY EXITS.

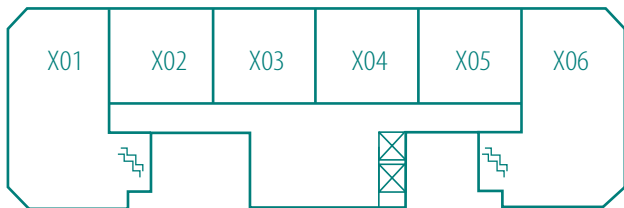
Layouts are not to scale. For informational purposes only.

# ST. LUCIA

AT SILVER SHELLS BEACH RESORT

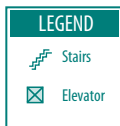
## ELEVATOR SERVICE

St. Lucia is equipped with one set of elevators. Key fobs are provided to allow access to St. Lucia's lobby and garage.



FLOOR: \_\_\_\_\_

RESIDENCE: \_\_\_\_\_



Trash chutes are located in the hallway.

FIRE PULL ALARMS AND FIRE EXTINGUISHERS ARE LOCATED ON REAR TERRACE NEAR EMERGENCY EXITS.

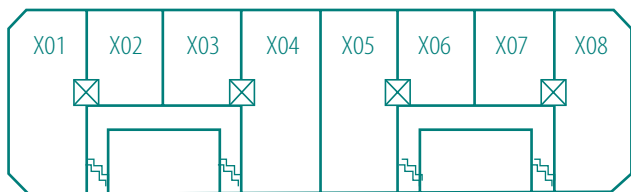
Layouts are not to scale. For informational purposes only.

# ST. MAARTEN

## AT SILVER SHELLS BEACH RESORT

### ELEVATOR SERVICE

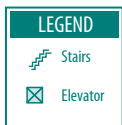
St. Maarten is equipped with four semi-private elevators. Your key card allows access to St. Maarten's lobby and garage.



ELEVATOR:            1        2        3        4

BUTTON:             \_\_\_\_\_

RESIDENCE:         \_\_\_\_\_



Enter the elevator and place your key card in front of the card reader until you hear a chirp. Press the button listed above. This button will remain illuminated until the elevator opens directly into your residence.

Trash chutes are located outside your back door.

FIRE PULL ALARMS AND FIRE EXTINGUISHERS ARE LOCATED ON REAR TERRACE NEAR EMERGENCY EXITS.

Layouts are not to scale. For informational purposes only.